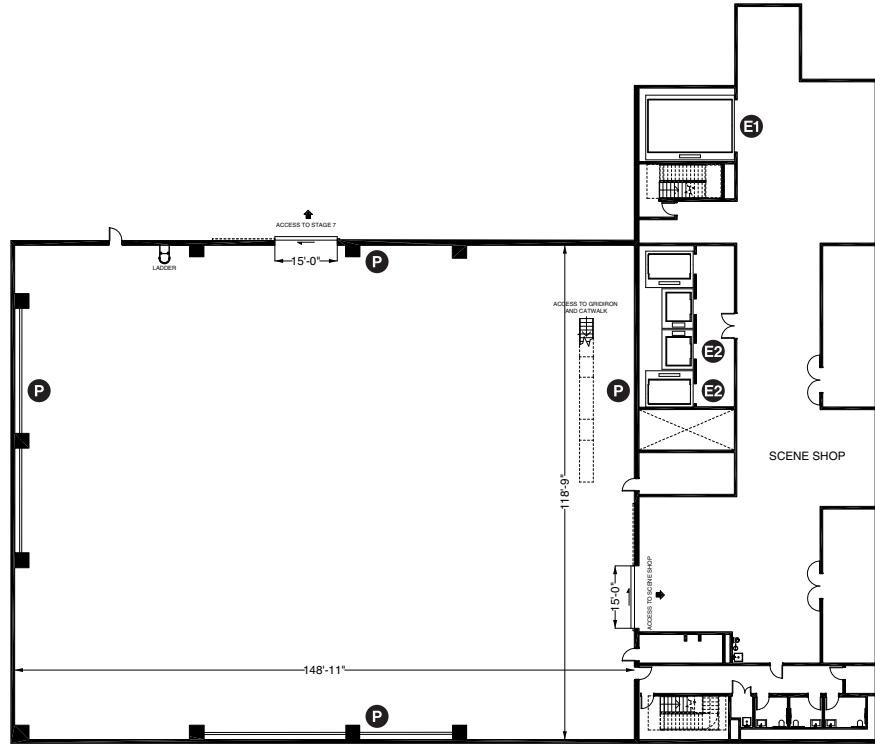


STAGE 6

Upper Stages (Level 5)

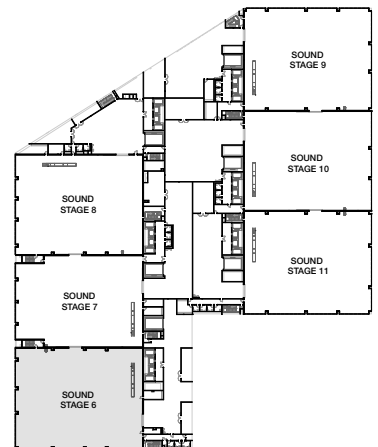


- P** 440 AMP Bullswitch
- E1** Shared Elevator Access
- E2** Dedicated Elevator Access

Floor Plan

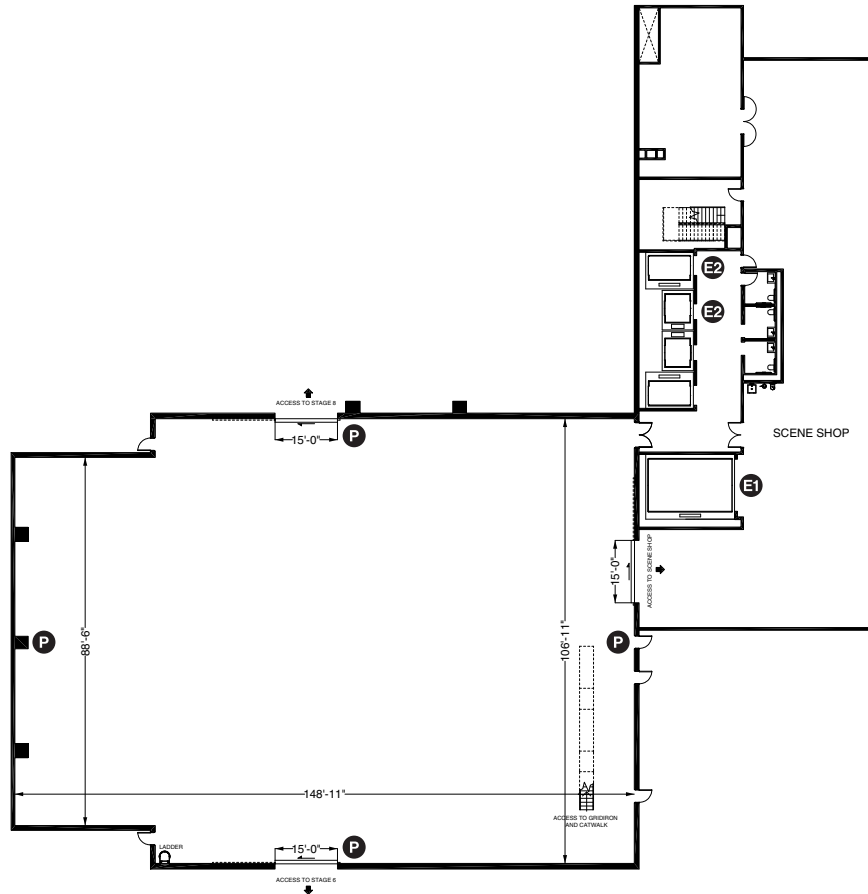
Stage Information

Width x Length	148'-11" x 118'-9"
Area	18,000 SF
Height to Grid	45'
Power	7,200 AMPS
HVAC	29,000 CFM supply, 20,000 CFM exhaust
Air Conditioning	119 SF/Ton
Support Facilities	Dimmer, Camera Room, Toilet Rooms and Janitor's Closet



STAGE 7

Upper Stages (Level 5)

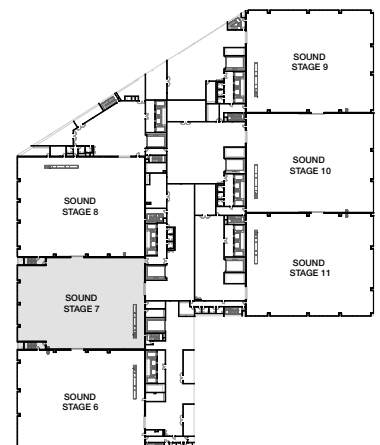


- P** 440 AMP Bullswitch
- E1** Shared Elevator Access
- E2** Dedicated Elevator Access

Floor Plan

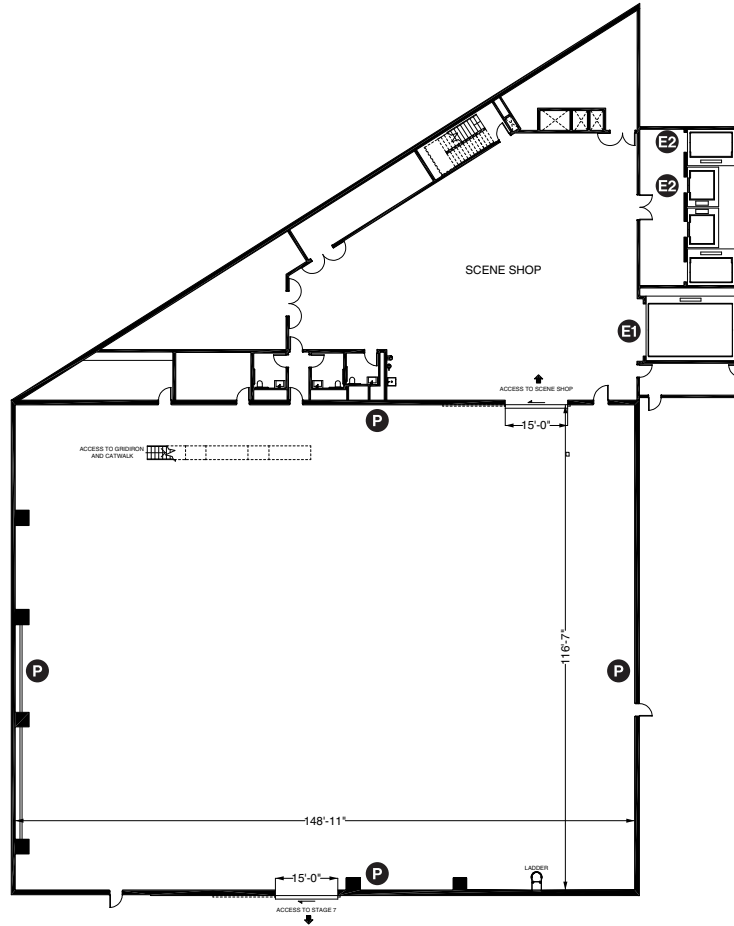
Stage Information

Width x Length	148'-11" x 106'-11"
Area	16,500 SF
Height to Grid	45'
Power	7,200 AMPS
HVAC	29,000 CFM supply, 20,000 CFM exhaust
Air Conditioning	119 SF/Ton
Support Facilities	Dimmer, Camera Room, Toilet Rooms and Janitor's Closet



STAGE 8

Upper Stages (Level 5)

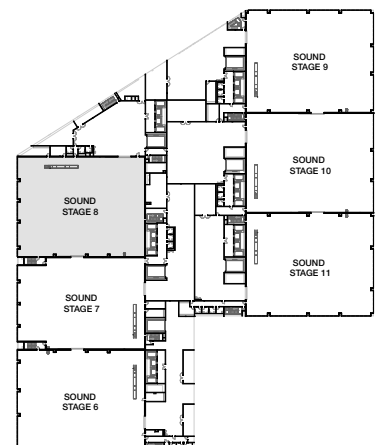


- P** 440 AMP Bullswitch
- E1** Shared Elevator Access
- E2** Dedicated Elevator Access

Floor Plan

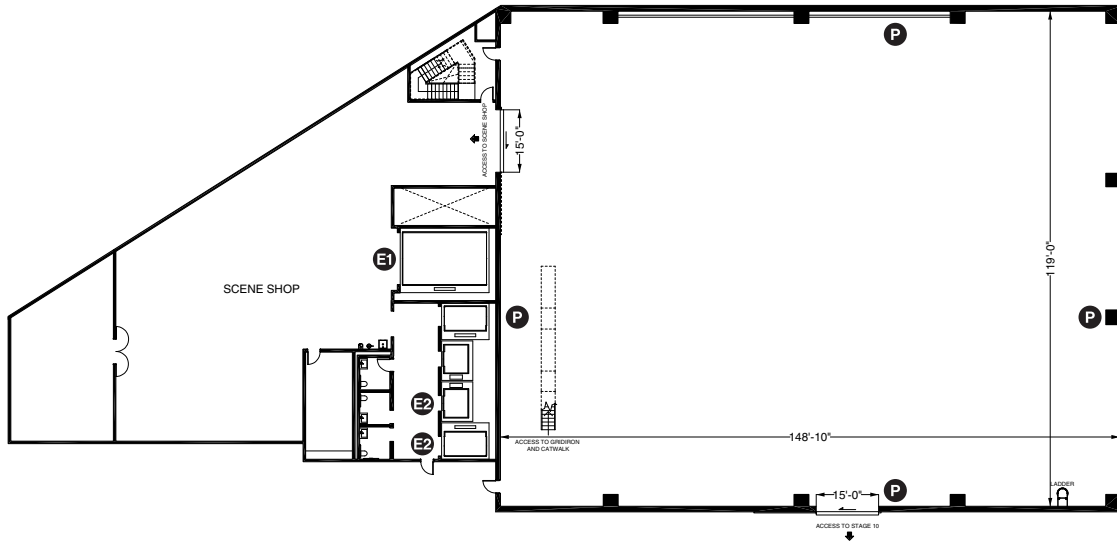
Stage Information

Width x Length	148'-11" x 116'-7"
Area	18,000 SF
Height to Grid	45'
Power	7,200 AMPS
HVAC	29,000 CFM supply, 20,000 CFM exhaust
Air Conditioning	119 SF/Ton
Support Facilities	Dimmer, Camera Room, Toilet Rooms and Janitor's Closet



STAGE 9

Upper Stages (Level 5)

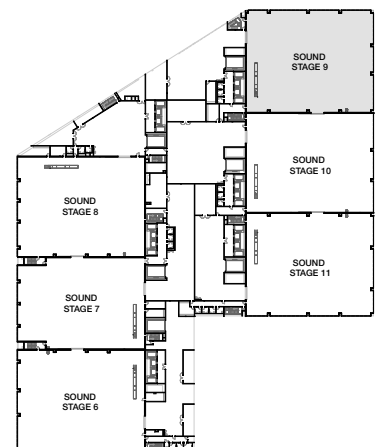


- P** 440 AMP Bullswitch
- E1** Shared Elevator Access
- E2** Dedicated Elevator Access

Floor Plan

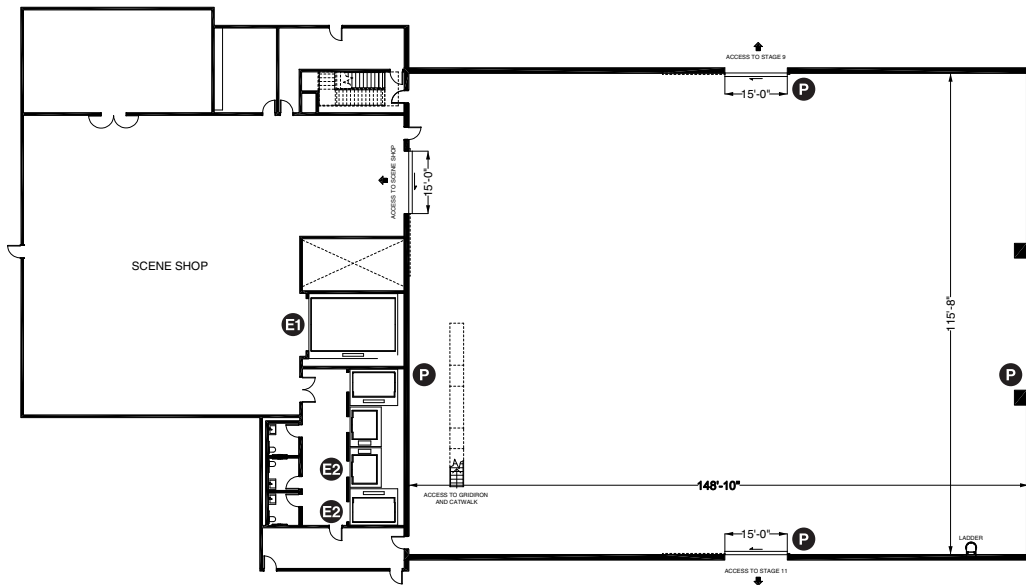
Stage Information

Width x Length	148'-10" x 119'-0"
Area	18,000 SF
Height to Grid	45'
Power	7,200 AMPS
HVAC	29,000 CFM supply, 20,000 CFM exhaust
Air Conditioning	119 SF/Ton
Support Facilities	Dimmer, Camera Room, Toilet Rooms and Janitor's Closet



STAGE 10

Upper Stages (Level 5)

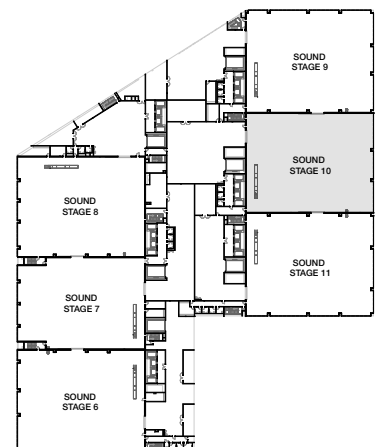


- P** 440 AMP Bullswitch
- E1** Shared Elevator Access
- E2** Dedicated Elevator Access

Floor Plan

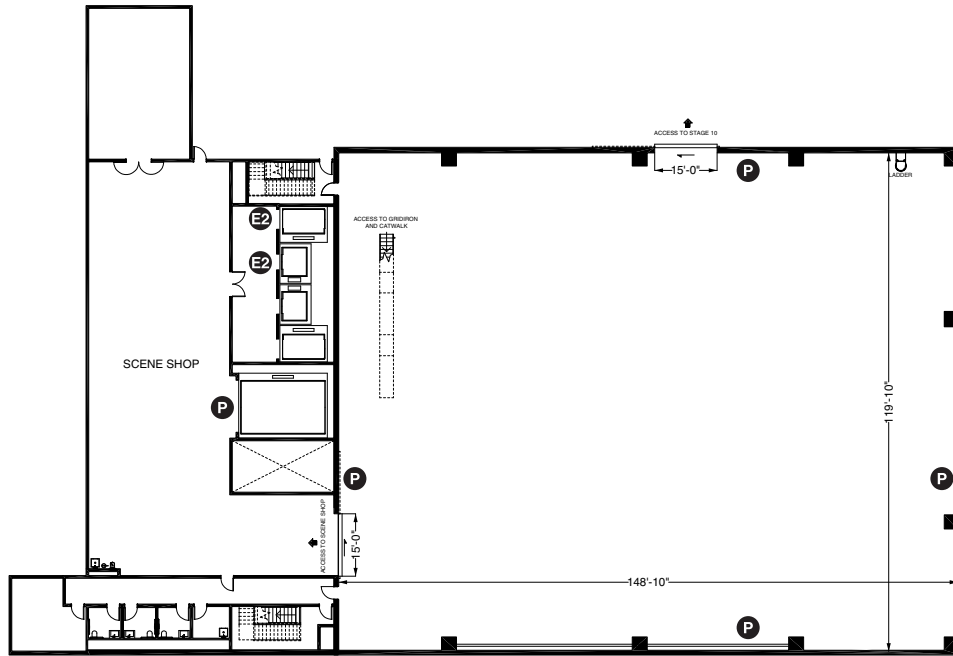
Stage Information

Width x Length	148'-10" x 115'-8"
Area	18,000 SF
Height to Grid	45'
Power	7,200 AMPS
HVAC	29,000 CFM supply, 20,000 CFM exhaust
Air Conditioning	119 SF/Ton
Support Facilities	Dimmer, Camera Room, Toilet Rooms and Janitor's Closet



STAGE 11

Upper Stages (Level 5)



- P** 440 AMP Bullswitch
- E1** Shared Elevator Access
- E2** Dedicated Elevator Access

Floor Plan

Stage Information

Width x Length	148'-10" x 119'-10"
Area	18,000 SF
Height to Grid	45'
Power	7,200 AMPS
HVAC	29,000 CFM supply, 20,000 CFM exhaust
Air Conditioning	119 SF/Ton
Support Facilities	Dimmer, Camera Room, Toilet Rooms and Janitor's Closet

