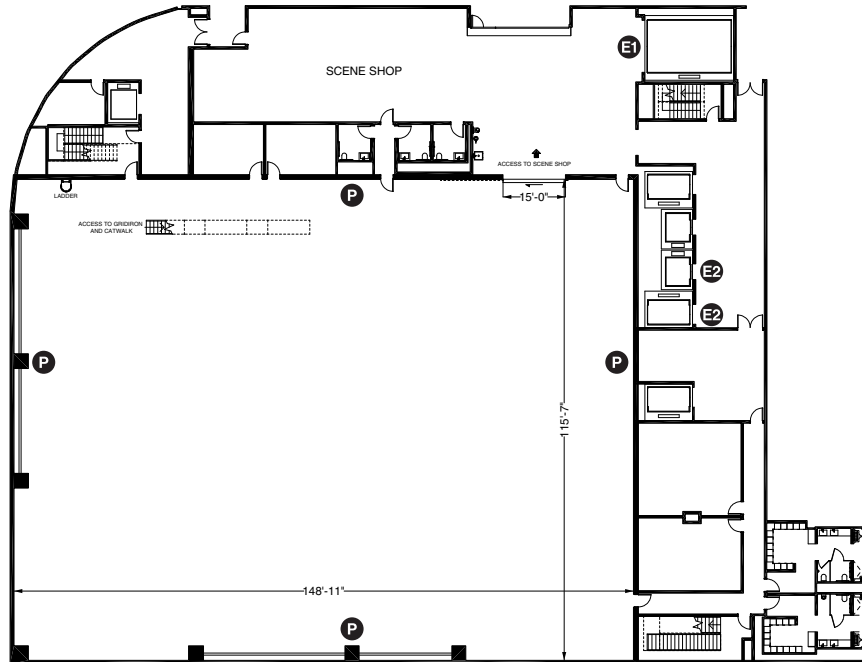


# STAGE 1

## Lower Stages (Level 1)

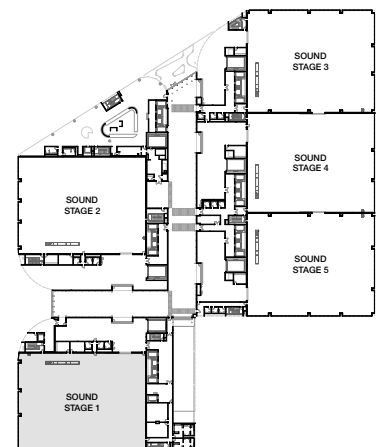


- P** 440 AMP Bullswitch
- E1** Shared Elevator Access
- E2** Dedicated Elevator Access

## Floor Plan

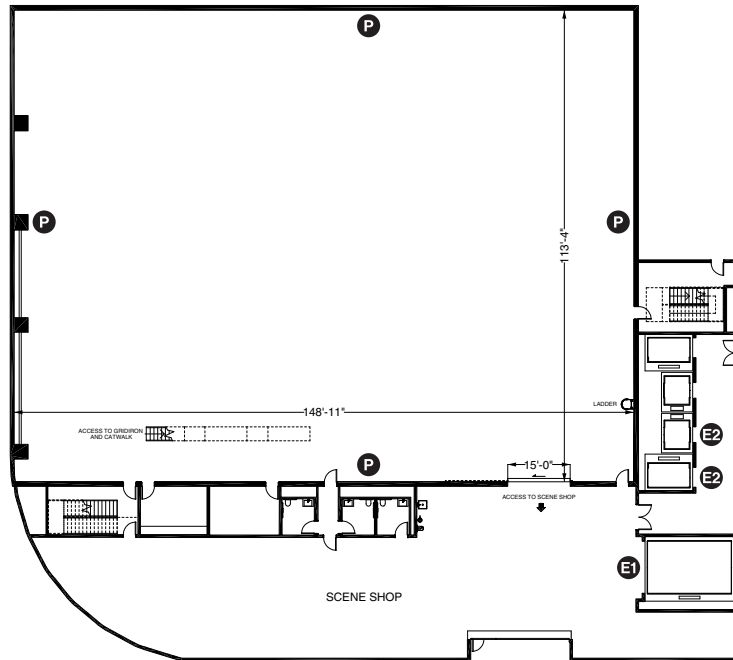
## Stage Information

Width x Length	148'-11" x 115'-7"
Area	18,000 SF
Height to Grid	45'
Power	7,200 AMPS
HVAC	29,000 CFM supply, 20,000 CFM exhaust
Air Conditioning	119 SF/Ton
Support Facilities	Dimmer, Camera Room, Toilet Rooms and Janitor's Closet



# STAGE 2

## Lower Stages (Level 1)

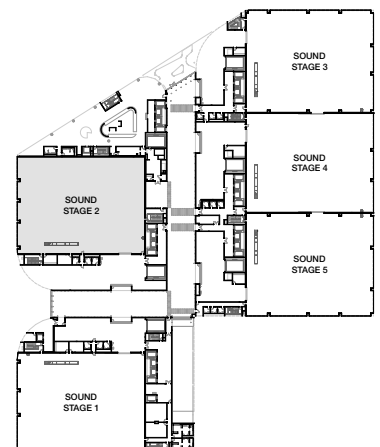


- P** 440 AMP Bullswitch
- E1** Shared Elevator Access
- E2** Dedicated Elevator Access

## Floor Plan

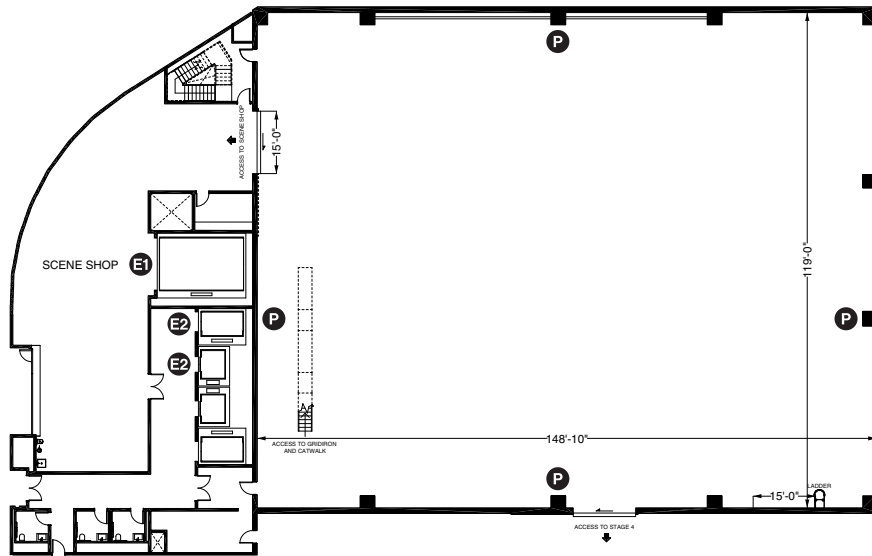
## Stage Information

Width x Length	148'-11" x 113'-4"
Area	18,000 SF
Height to Grid	45'
Power	7,200 AMPS
HVAC	29,000 CFM supply, 20,000 CFM exhaust
Air Conditioning	119 SF/Ton
Support Facilities	Dimmer, Camera Room, Toilet Rooms and Janitor's Closet



# STAGE 3

## Lower Stages (Level 1)

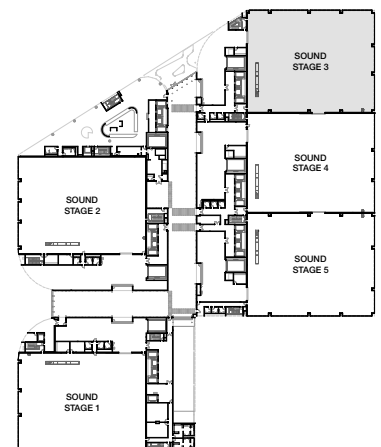


- P** 440 AMP Bullswitch
- E1** Shared Elevator Access
- E2** Dedicated Elevator Access

## Floor Plan

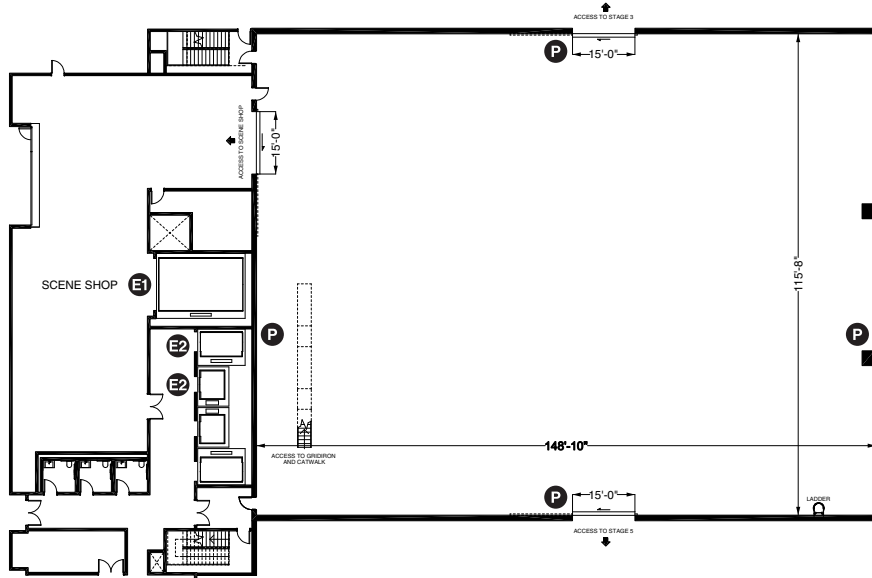
## Stage Information

Width x Length	148'-10" x 119'-0"
Area	18,000 SF
Height to Grid	45'
Power	7,200 AMPS
HVAC	29,000 CFM supply, 20,000 CFM exhaust
Air Conditioning	119 SF/Ton
Support Facilities	Dimmer, Camera Room, Toilet Rooms and Janitor's Closet



# STAGE 4

## Lower Stages (Level 1)

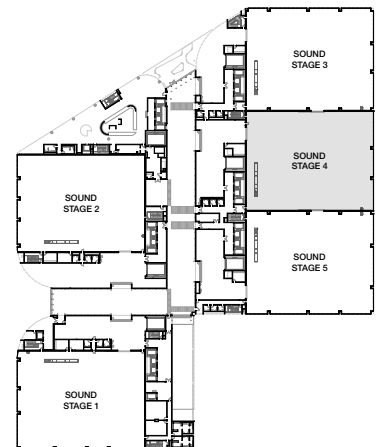


- P** 440 AMP Bullswitch
- E1** Shared Elevator Access
- E2** Dedicated Elevator Access

## Floor Plan

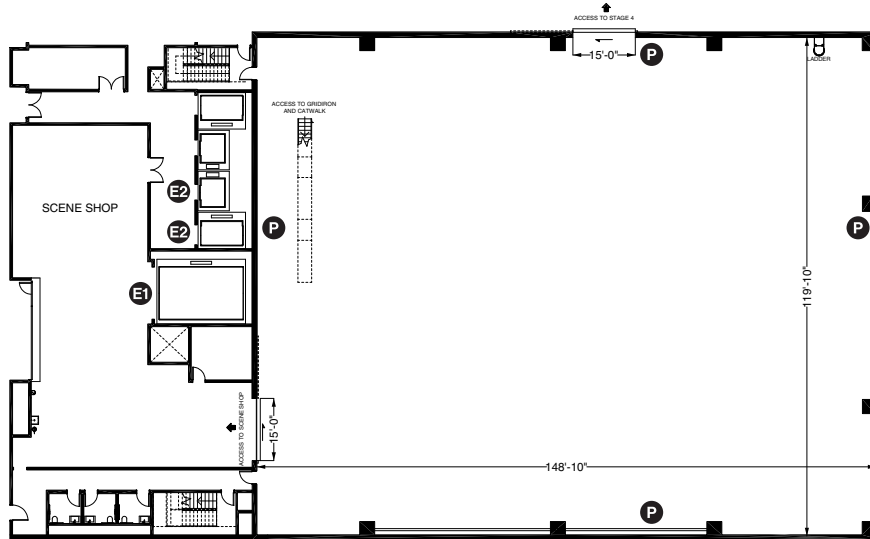
## Stage Information

Width x Length	148'-10" x 115'-8"
Area	18,000 SF
Height to Grid	45'
Power	7,200 AMPS
HVAC	29,000 CFM supply, 20,000 CFM exhaust
Air Conditioning	119 SF/Ton
Support Facilities	Dimmer, Camera Room, Toilet Rooms and Janitor's Closet



# STAGE 5

## Lower Stages (Level 1)



- P** 440 AMP Bullswitch
- E1** Shared Elevator Access
- E2** Dedicated Elevator Access

## Floor Plan

## Stage Information

Width x Length	148'-10" x 119'-10"
Area	18,000 SF
Height to Grid	45'
Power	7,200 AMPS
HVAC	29,000 CFM supply, 20,000 CFM exhaust
Air Conditioning	119 SF/Ton
Support Facilities	Dimmer, Camera Room, Toilet Rooms and Janitor's Closet

